

# Can you spot the differences?

Usually it's dramatic after a reroof project. The change isn't as obvious for the St. Cloud Area Recreation and Civic Center.

- Hints: 1) the smaller portion only shows a little bit of dirt five years later
- 2) the larger portion metal fluting was covered by the PVC membrane



Back in 2019, we reroofed the smaller 3,200 square foot portion of the building, and this year the 8,900 square foot section by installing a PVC membrane system over the metal roof. Rust and overall deterioration of the metal made both replacements necessary.

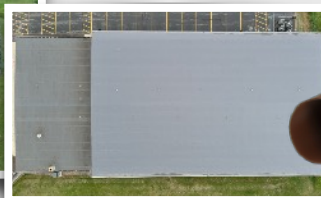


While the changes might not be easy to see here, the reasons to install a membrane over a metal roof are clear. The initial cost is the biggest reason to decide not to replace metal with metal. While metal may be a good alternative, the expansion and contraction in the Wisconsin seasons take a toll on the fasteners holding the metal down. A PVC membrane comes with up to a 20-year warranty and is less than half the cost of metal. Ease of installation and much shorter timeframe to complete than metal are also good reasons. And with increasing energy costs, the flute fill and overall insulation that are added make membrane installation the final best decision over metal.

By working with Precision, this building owner followed a reroof schedule and maximized the life of the original metal roof.



The majority of the membranes we install are white, but the owners chose gray to complement the building tone.



Email for details on how we can create a reroof schedule for you. ▶