



Roofing Report

Prepare Your Roof for Winter

Now is the time to inspect the condition of your roof and remove debris that has the potential to cause problems when ice and snow arrive. Some warranties require regular maintenance in order to remain in effect.



Hiring a professional, commercial roofing contractor may be the best alternative, but if you prefer to do it yourself, here are four key items:

1

CLEAR

Clear debris including leaves, pine needles, tree branches, and, surprisingly, possible materials left from other contractors who have been on your roof.

2

CHECK

Check flashings on all protrusions including HVAC units, pipes, vents, and drains. Even a small puncture in the membrane or eroded seam material can allow for water to get inside and create a leak.

3

WALK

Walk the entire surface paying attention for soft spots which could be an indication of wet insulation, punctures, or loose seals.

4

MAINTAIN

Maintain a detailed installation and maintenance file so should issues regarding the warranty come into play, you have all the required information.

Tax Impact Still Possible for a Roof Upgrade

With the 2018 Tax Code Section 179, you as a commercial property owner may have the opportunity to deduct 100% immediately (up to \$1 million) for a roof system upgrade.



And while winter isn't the time you'd expect to replace your roof, sometimes Mother Nature has alternate plans. Our experienced crew at Precision Roofing works throughout the year to remove and replace commercial and industrial flat roofs.

With the membrane roofing system we install, a controlled portion of the roof is replaced each day. This ensures that a weather-resistant barrier remains in place at all times.

We have limited slots available on our install schedule but will find a way to help you take advantage of the tax savings and ward off the challenges of Wisconsin's winter.

A Picture is Worth a Thousand Words

When you choose Precision for your flat roof project, you'll be among great company. Here are some of our recent projects:



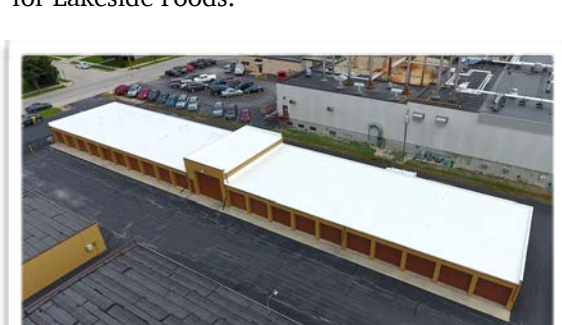
We've installed roofs on multiple Burger King locations throughout the state.



Over the course of a number of years, we've reroofed 10,000 square foot sections and larger for Lakeside Foods.



CA Flipse had a smaller 3,000 square foot roof that needed replacing.



As Transpo Self-Storage has expanded over time, they have selected Precision for all their roofing projects.



The 50,000 square foot roof of Cascade Cheese is typical of a larger project for Precision.

Ironically, a number of our most recent projects are for buildings in the food industry. Due to the great number of protrusions on those roofs and the demanding exhaust, Duro-Last material is usually specified. As a qualified Duro-Last contractor, Precision is invited to bid on projects.

SIT BACK AND SEE A REMOVAL/REROOF IN ACTION [CLICK TO WATCH VIDEO](#)

If you enjoyed the "Dirty Jobs" series by Mike Rowe, then our newest video will interest you. Filmed at the height of summer heat and with no relief from the blaring sun, compressed into just over two and a half minutes, are weeks of work by the Precision crew completing a typical removal and reroof for an industrial building. As you'll see, it's demanding physically and requires careful attention to all stages of the project to assure the new roof is installed right.